



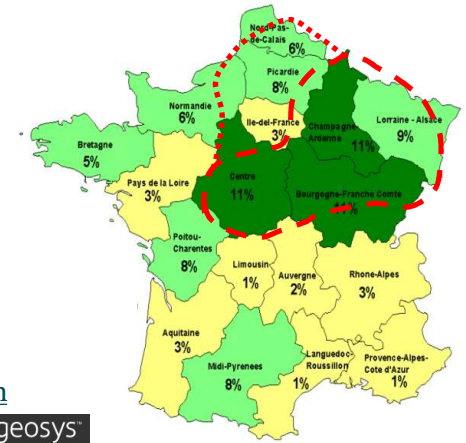
The farmer-maltsters

## **RMI Analytics France Virtual Insights Tour**

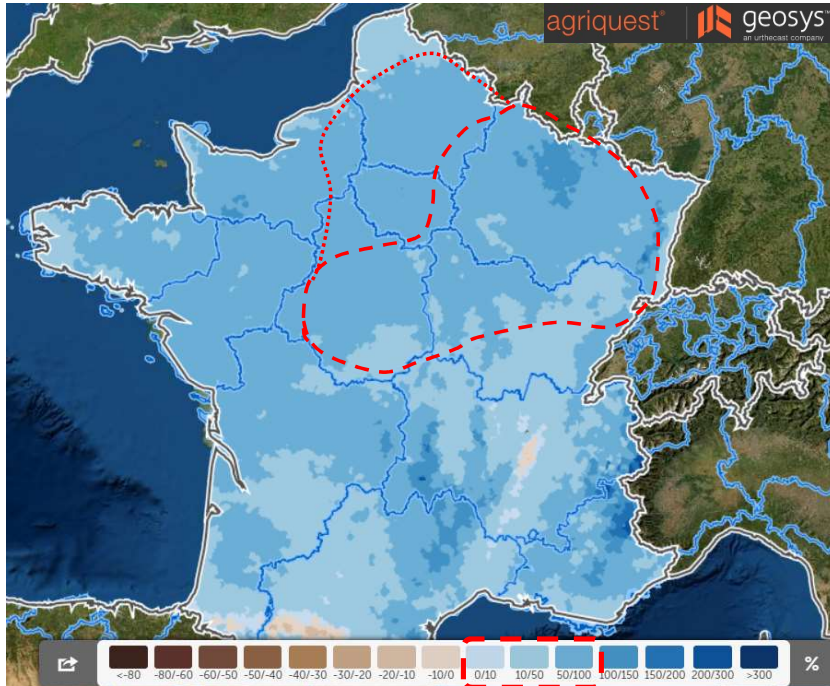
June 11<sup>th</sup>, 2020



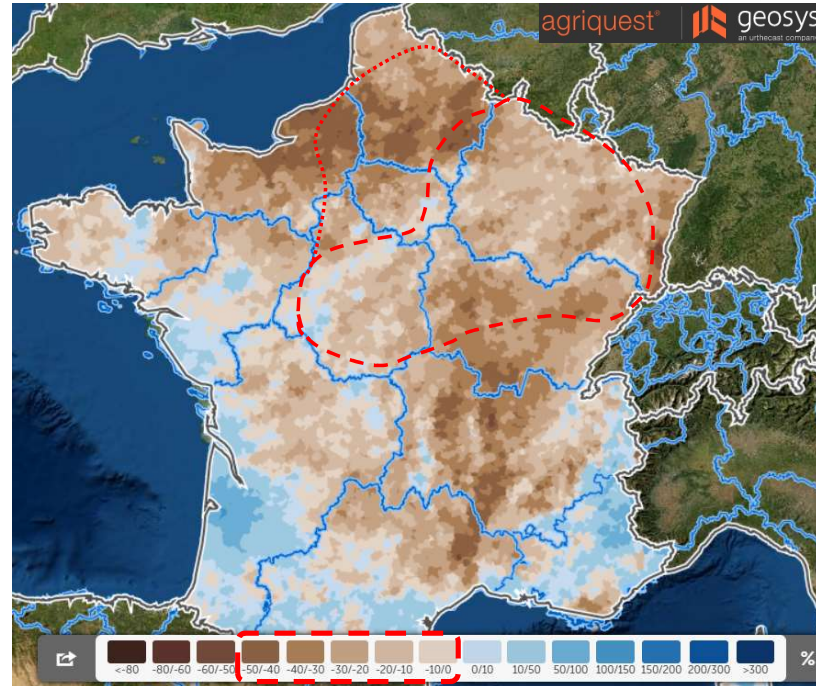
# Radical climate between winter and spring



Rainfalls anomalies between October and February

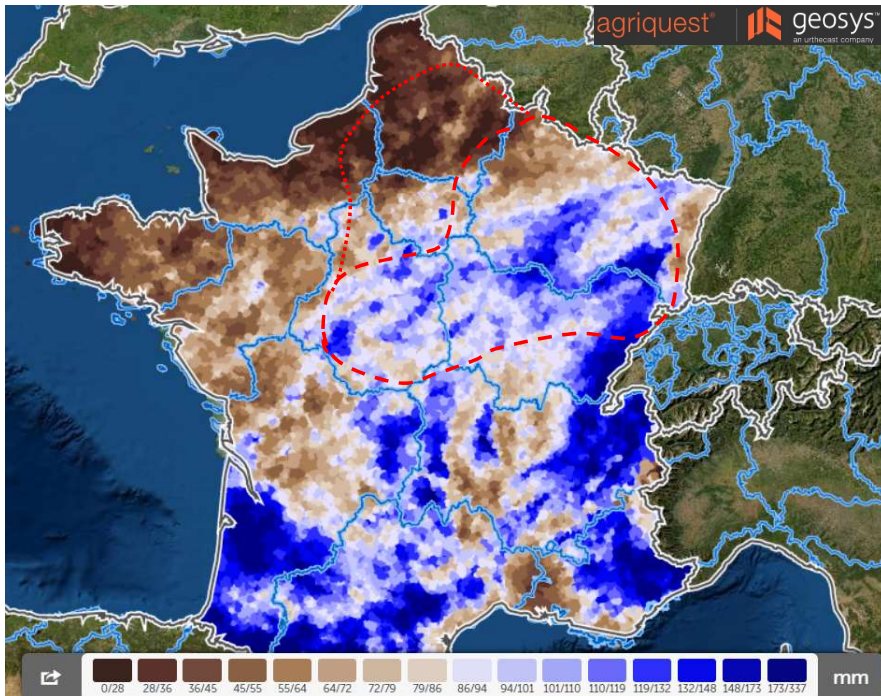


Rainfalls anomalies between March 1st and June 08th

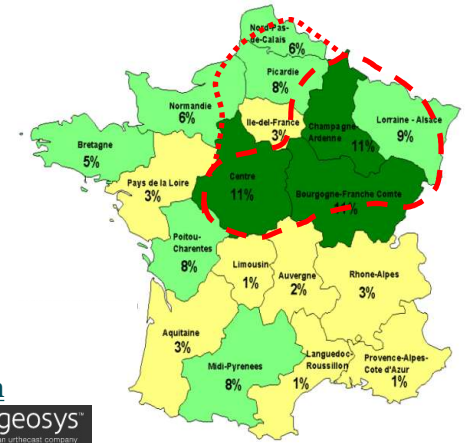
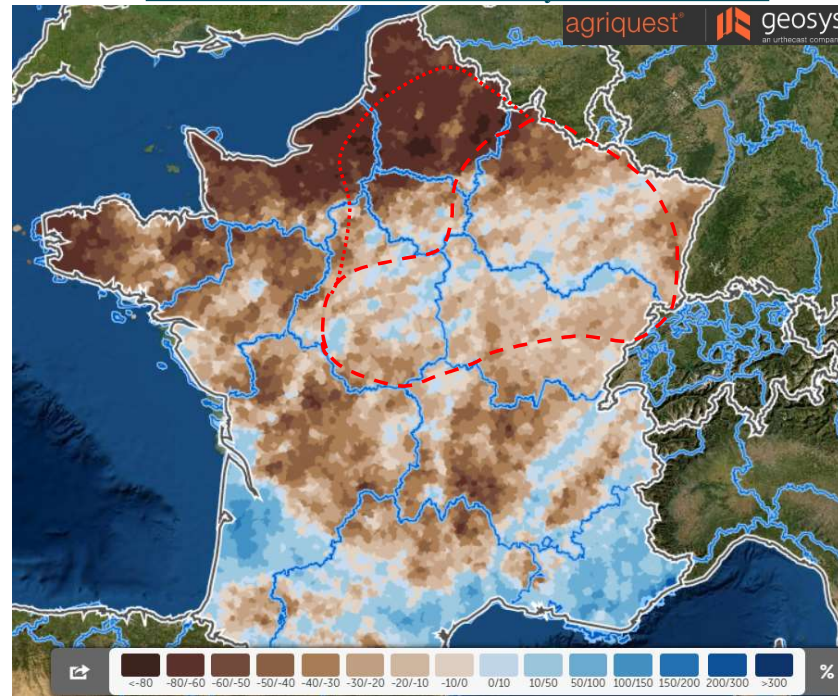


# Very sprouted rains in May

Cumulated rainfalls between May 1st and June 8th



Rainfalls anomalies between May 1st and June 8th

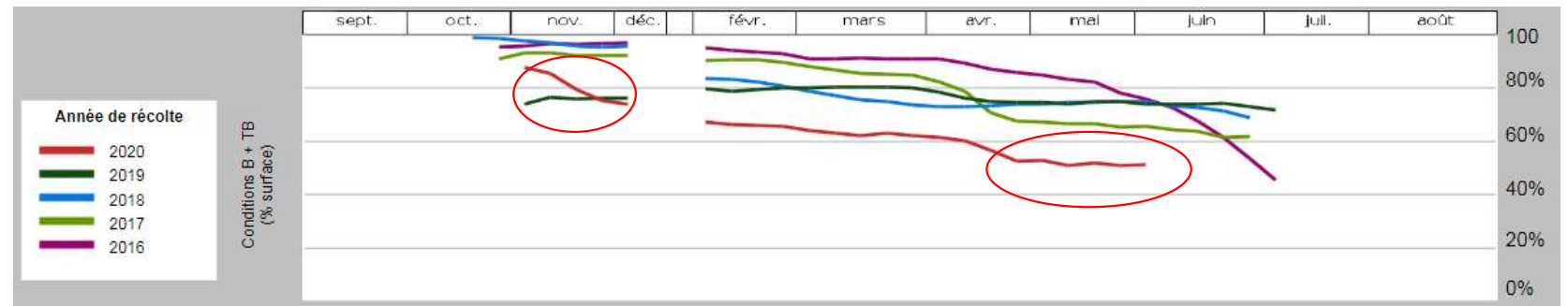


# Bad rating for spring and winter barley

## Winter barley:

Too wet conditions during winter

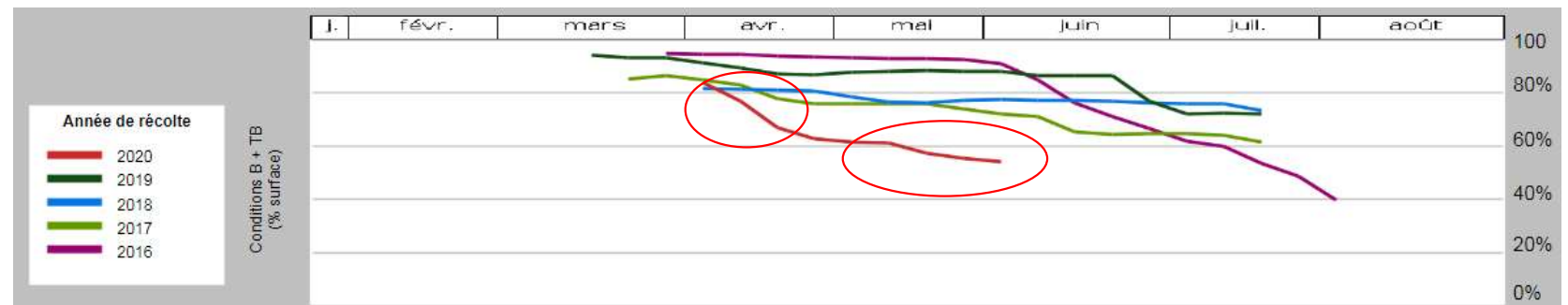
Barley Yellow Draft Virus (BYDV)



## Spring barley:

too dry conditions at sowing time

Hot temperatures



Source : CereObs - FranceAgriMer